

## Press Release Dundon Passivhaus

### **New Passivhaus by Prewett Bizley Architects completed in Somerset**

17 February 2015 - Somerset



Set at the foot of a wooded hill, the house is designed to establish a strong relationship between the interior and the expansive landscape of the Somerset levels. Different rooms relate to particular external spaces or features in the landscape via large windows, making each room distinct and drawing in the character of the surrounding countryside.

The house replaced a dilapidated 1920's bungalow just beyond the edge of the village of Dundon and its nearest neighbours are mainly agricultural buildings. By digging the lower floor into the hillside planning permission was gained for a two-storey house with a roof that is only marginally higher than the bungalow it replaced. The design aims to preserve the rural nature of the surroundings and resists introducing the suburban features that characterise much rural development. The house presents a solid wall on the elevation facing the village, with punched window openings and a gentle pitched roof similar to those on near-by vernacular buildings. On the other three sides the roof extends beyond the footprint to create sheltered outdoor spaces that catch the sun at different times of day and extend the season for outdoor living. The thermal envelope is defined by thick, timber-framed walls clad with green oak boards that will weather over time to silver-grey. An out-rigger structure of green oak posts supports the roof and frames views through the covered spaces, binding the building into the landscape. Internally the entrance hall and reception rooms are lined in planed oak, a more refined version of the rough sawn external cladding. A progression of different scaled spaces opens up towards the view, united by a painted rough-sawn timber ceiling that follows the pitch of the roof. Bedrooms are lined with painted plywood, allowing a more flexible approach to decoration in the future.

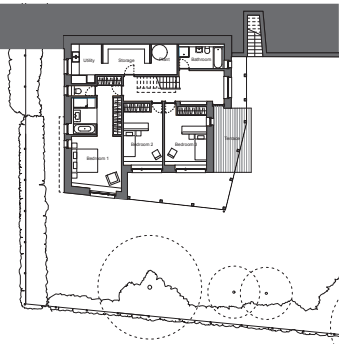
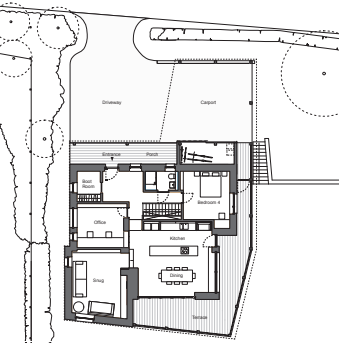
The house is being certified to Passivhaus standard which means it achieves very high levels of insulation and airtightness. The wall construction is vapour permeable to moderate humidity and create a healthy internal atmosphere. A mechanical ventilation system with heat recovery provides constant fresh air throughout the colder months when it is undesirable to open the windows. The roof overhangs work in harmony with the energy strategy by providing summer shading to the large areas of glazing. Architecture does not have to be sacrificed for excellent energy performance.

Prewett Bizley Architects was established in London in 2005 by Graham Bizley and Robert Prewett. The practice has gained a reputation for well-crafted, low-energy architecture that responds sensitively to the character of its context. Our Somerset studio opened in 2012, with a particular interest in developing appropriate architectural responses for rural communities and the wider landscape.

For further information please contact:  
tel: +44 (0)1458 273778  
gb@prewettbizley.com

Graham Bizley  
Prewett Bizley Architects [www.prewettbizley.com](http://www.prewettbizley.com)  
Beacon View, Compton Dundon, Somerset, TA11 6NZ, UK

Interior and Plans





# Exterior and Context

